

# Explore the Shannon on a cruiser





Untouched nature, clean air and clear water, this is the surroundings where it is very easy to forget about all your stress. On some 300 miles the Shannon and the Erne find their way through green meadows and the Irish lakelands.

We would be only too delighted to share our experience with you - looking for a golf course, want to catch a big fish, looking for a nice restaurant or just a lovely pub to have a good pint - be sure we have the right answer.

The crew of Waveline Cruisers want you to have an unforgettable holiday in Ireland, far away from mass tourism without any stress or trouble.

The management of Waveline Cruisers guarantees the highest standards and best service. All Waveline-cruisers are on the latest technical standard. They are especially built for Waveline Cruisers and equipped to meet all expectations.

Waveline offers four different types of cruisers, suitable for two up to six persons.

Every cruiser comes with a rowing dinghy.

There is no boat-license required in Ireland and Northern Ireland, anyone 21 years or over can hire a cruiser. When you arrive at Killinure Point you will get full instructions followed by a trial run.





### **Floating holiday home**

You will find everything on board to make you feel comfortable: A cosy salon, sleeping cabins with supplied bedlinen, a fully equipped galley with full-size gas cooker, grill, oven, fridge and sink. Dishes, cutlery, pots and pans are on board as well. The sanitary facilities include one or two showers, toilet(s), sink(s) and all the towels you might need. A radio/cassette player is also fitted.



### **Fuel, gas and water**

Our cruisers are fitted with an economic diesel engine, which needs approx. 6 litres per hour. The gas on board lasts for two to three weeks, the water-tank should be filled every two to three days. Water tap facilities are marked on the map.



### **Electricity and lights**

There are two separate batteries on board. One is for domestic use, the other one is just for starting the engine. The batteries charge whilst cruising. 12-Volt sockets for charging or running mobile phones, camcorders etc. are also on board.



### **Insurance and security deposit**

On commence of the cruise a (refundable) deposit of Euro 600 must be paid either by cash or credit card (Visa/Euro). If no loss or damage has occurred to the cruiser, its contents and its dinghy, or to third parties, the deposit will be refunded in full.





### **The galley on board**

All our cruisers have a fully equipped galley with gas cooker, grill, oven, fridge and sink. Dishes, cutlery, pots, pans and all towels are on board. Of course, you can have lunch/dinner in one of the pubs or restaurants along the Shannon, Irish stew isn't the only world famous dish!



### **If it gets cold.....**

.... the central-heating on our cruisers will make you feel comfortable.



### **No boat-license**

There is no boat-license required in Ireland and Northern Ireland, anyone 21 years or over can hire a cruiser. When you arrive at Killinure Point you will get full instructions followed by a trial run - and your holiday cruise can begin. In a short time, even inexperienced people have no problem in handling a cruiser on the Irish waterways.



### **Extras**

A range of extras is available at our base in Killinure Point: Large fishing dinghy, outboard, bicycles if you want to get away from the water for a while.



# Waveduke



**suitable for two to three persons,  
ideal for two**

Measurements: Length 8,84 m, width: 3,17 m  
2 separate cabins, toilet with sink and shower, galley,  
radio/cassette, 12-volt-cigarette-lighter sockets, hot  
water supply, waste water holding  
tank, central heating, bathing platform, lots of  
storage space, dinghy

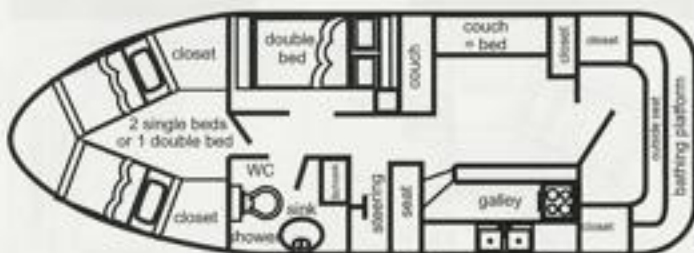


# Waveprincess



**suitable for two to four persons, ideal for young couples or a family with children**

Measurements: Length 9,45 m, width: 3,50 m  
3 separate cabins, toilet with sink and shower, galley, radio/cassette, 12-volt-cigarette-lighter sockets, hot water supply, waste water holding tank, central heating, bathing platform, lots of storage space, dinghy

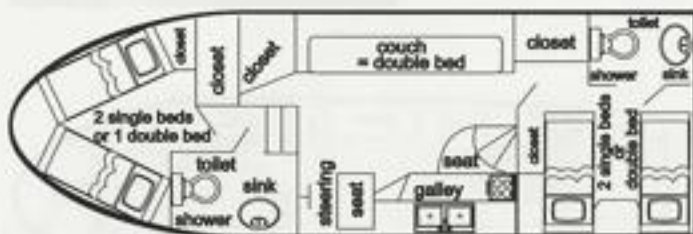


# Waveearl



**suitable for two to six persons,  
ideal for four**

Measurements: Length 9,75 m, width: 3,65 m  
3 separate cabins, 2 toilets with sink and shower,  
large galley, radio/cassette, 12-volt-cigarette-lighter  
sockets, hot water supply, waste water holding tank,  
central heating, 2nd steering  
outside (flybridge), sun deck,  
bathing platform, dinghy



# Wavequeen



**suitable for up to six persons, ideal for three couples or a family**

Measurements: Length 11,30 m, width: 3,65 m  
4 separate cabins, 2 toilets with sink and shower, large galley, radio/cassette, 12-volt-cigarette-lighter sockets, hot water supply, waste water holding tank, central heating, 2nd steering outside (flybridge), sun deck, bathing platform, dinghy



## How to get there

### **Ferry port Rosslare:**

After your arrival in Rosslare Harbour take the N25 direction Wexford. About 15 miles later you will meet a roundabout, where you take the N11 direction Enniscorthy / Dublin.

3 miles after driving through Enniscorthy turn left onto N80 direction Carlow / Portlaoise.

Follow N80 through Carlow, Portlaoise and Tullamore to Moate (approx. 75 miles), where you will meet the N6 turn left, direction Athlone.

Coming to Athlone you will meet a roundabout, where you drive towards Galway. You will find yourselves on a by-pass, which you have to leave at the first exit, signposted as "N55, Ballymahon, Cavan". Turn right, always towards Ballymahon. About 1 mile later you will meet a cross-road, turn right towards Ballymahon, Cavan. Being on this road you will get to Ballykeeran and after a short while to Glasson, where you have to take a left after passing the petrol station. This turn is signposted with a large sign for "Glasson Golf, Quigley's Marina". Follow this typical Irish backroad all the way down (approx. 4 miles), some signs for "Killinure Point" will guide you as well - and there is our base.

### **Ferry ports Dublin / Dun Laoghaire or Dublin Airport**

After arriving at Dublin Northwall, Dun Laoghaire or Dublin Airport, have a look for M50 "Westlink" or N4 "The West". The M 50 is a motorway like ringroad around Dublin. Driving on the M 50 you will meet an exit signposted "N4 The West". Take this exit and follow direction Galway, Sligo. About 30 miles later you will get to the large roundabout of Kinnegad, where you have to turn left for the N6 towards Galway / Athlone. Another 25 miles later you will meet the Athlone roundabout, where you drive towards Galway. You will find yourselves on a by-pass, which you have to leave at the first exit, signposted as "N55, Ballymahon, Cavan". Turn right, always towards Ballymahon. About 1 mile later you will meet a cross-road, turn right towards Ballymahon, Cavan. Being on this road you will get to Ballykeeran and after a short while to Glasson, where you have to take a left after passing the petrol station. This turn is sign posted with a large sign for "Glasson Golf, Quigley's Marina". Follow this typical Irish backroad all the way down (approx. 4 miles), some signs for "Killinure Point" will guide you - and there is our base.

### **Shannon Airport**

After your arrival at Shannon Airport take the N16 towards Ennis / Galway. In Gort, approx. 12 miles past Ennis, take the N66 towards Loughrea. Getting to Loughrea you will meet the N6, which you follow towards Ballinasloe / Athlone / Dublin.

Close to Athlone the N6 turns into a motorway like road, on which you have to look out for the exit signposted "Lough Ree East, Cavan". After taking this exit you have to turn left, direction Cavan, Ballymahon. Being on this road you will get to Ballykeeran and after a short while to Glasson, where you have to take a left after passing the petrol station. This turn is sign posted with a large sign for "Glasson Golf, Quigley's Marina". Follow this typical Irish backroad all the way down (approx. 4 miles), some signs for "Killinure Point" will guide you - and there is our base.



# Standard Terms and Conditions

## 1. Agency Bookings

Bookings made through a travel agency are subject to normal travel agency procedures, regarding payments of deposits and final hire costs. A cruiser is booked only, when the official agency confirmation is received by the Company.

## 2. Direct Bookings

For bookings made directly by a hirer with the Company, a deposit of 10% of the total hire fee is payable at the time of booking. A cruiser is booked only, when the signed completed booking form together with the deposit has reached the Company, and a hire invoice confirming the booking has been dispatched to the hirer. The hirer is responsible for the whole fee once the booking is confirmed. Cancellation is subject to condition no. 3 of these Standard Terms and Conditions. Balance of the hire fees must be paid one month before taking over the boat without any further reminder from Waveline Cruisers.

## 3. Cancellations

Cancellation of bookings, whether made by direct hirers or agencies, for the peak season or for any cruise, which was due to commence within 6 weeks of the cancellation, are subject to payment of the total hire fee, unless the Company re-lets the cruiser. In the latter case a charge of 5% of the total hire fee will be made. We advise our customers to inform themselves about cancellation insurance.

## 4. Refundable Deposit

A refundable deposit of Euro 600 must be paid by Hirer at commencement of cruise either cash, cheque or credit card (Euro/Visa). If no loss or damage has occurred to the cruiser, its contents and its dinghy, or to third parties, the deposit will be refunded in full. A hirer may pay a non-refundable Boat Damage Waiver.

## 5. Boarding and Instruction

The hirer must be at least 21 years old and be in possession of a valid drivers license. The hirer is responsible for the whole crew, and will be held liable for any loss, damage or legal liability due to wilful and deliberate acts, including navigating outside the marked channel. Waveline Cruisers retains the right, to refuse to handover craft to any hirer, who is not considered a suitable person to take charge. In such a case Waveline Cruisers would refund the total fee and would not be liable in any way to the hirer. The hirer takes over the cruiser after settlement of the necessary formalities (deposit, check inventory) and full instructions on the workings of the cruiser and navigation on the Shannon. All hire periods commence from 4 p.m. onwards on Saturday or Wednesday. All cruisers are handed over with full fuel and water tanks. The hirer be obliged to respect the rules of Shannon Navigation Bye-Law and the regulations of Waveline Cruisers. Cruisers are not permitted to cruise after nightfall.

## 6. Accidents and break-downs

If an accident happens because of carelessness or disregard of the instructions, Waveline Cruisers cannot be held liable. The hirer agrees to inform immediately Waveline Cruisers of any damage to the cruiser and immediately endeavour to rectify the situation. Repairs must not be put into the hands of other firms or persons without authority.

## 7. Cruising Delays

The Company cannot be held liable for any slight inaccuracy that may exist. The booking is made on the understanding, that the boat will be placed at the disposal of the Hirer on the date, unless the Company is prevented due to circumstances outside its control from doing so. In this event every effort will be made to supply a similar craft. Should this prove impossible, any payments made will be refunded in full and the Hirer will have no further claim against the Company.

## 8. Return of Cruisers

The cruisers and equipment must be returned in a clean condition throughout and with full fuel- and watertanks by 10.00 a.m. on the day, the cruise ends. Failure to comply with any of these conditions will result in the hirer having to pay a fine, which in the case of late return can amount to an additional day's hire charge. If for some reason you are unable to clean your cruiser, Waveline Cruisers can provide a cleaning service, which you can pay for at the office.

## 9. Bicycles

Bicycles are hired at customers risk, and the Waveline Cruisers will accept no responsibility for loss or injury sustained by their use.

## Waveline Cruisers Ltd.

Quigley's Marina, Killinure Point

Glassan, Athlone

Co. Westmeath, Ireland

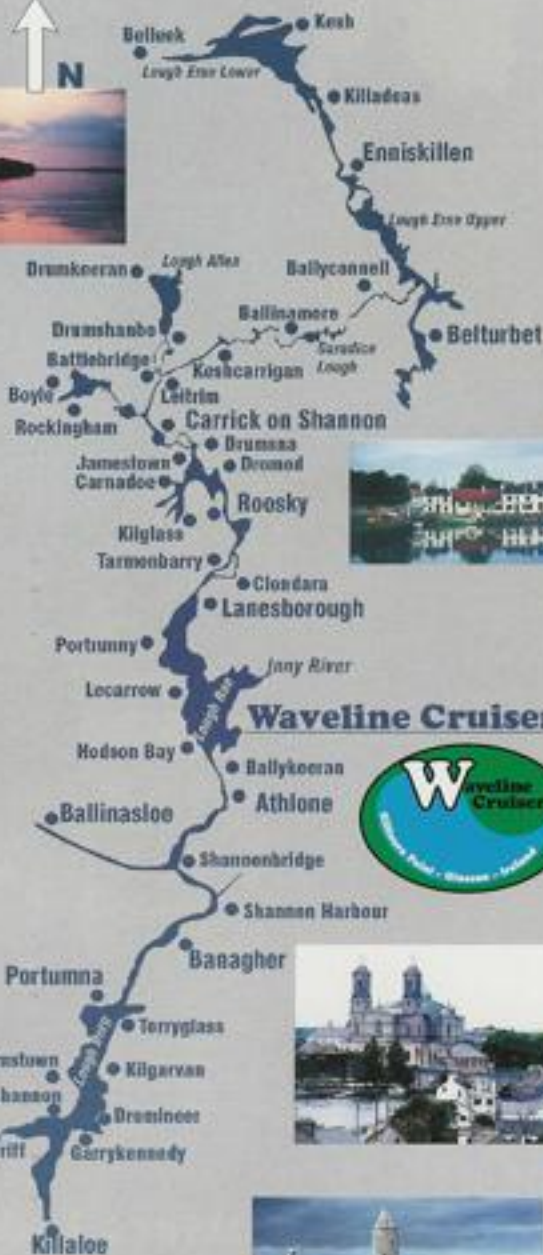
Tel.: 00353-(0)90-6485711

Fax: 00353-(0)90-6485716

email: [info@waveline.ie](mailto:info@waveline.ie)

Homepage: <http://www.waveline.ie>







Bord Fáilte approved



Member of the  
Irish Boat Rental Association



## **Waveline Cruisers Ltd.**

Quigley's Marina, Killinure Point

Glassan, Athlone

Co. Westmeath, Ireland

Tel.: 00353-(0)90-6485711

Fax: 00353-(0)90-6485716

email: [info@waveline.ie](mailto:info@waveline.ie)

Homepage: <http://www.waveline.ie>